

# V112-3.0 MW

One turbine for one world

[vestas.com](http://vestas.com)

**Vestas**<sup>®</sup>





WE DELIVER  
ON THE PROMISE  
OF WIND POWER



**Vestas**<sup>®</sup>



## ONE HARD-WORKING, RELIABLE TURBINE FOR ONE WORLD

### **Hard-working and reliable**

The V112-3.0 MW is a hard-working, reliable turbine designed for low and medium wind speed sites onshore anywhere around the world. These are the areas that comprise tomorrow's biggest market for wind power plants. The V112-3.0 MW can

generate more electricity than other turbines in the 3 MW class. It offers an exceptional rotor-to-generator ratio for greater efficiency and delivers unsurpassed reliability, serviceability and availability under all wind and weather conditions – setting a whole new standard for turbine performance and efficiency.



## THE ULTIMATE CHOICE FOR HIGH, STABLE PLANT OUTPUT

### **Innovative technology with decades of experience**

The V112-3.0 MW is built on tried and tested technology that Vestas has improved even further. We call it innovative technology with decades of experience. The V112-3.0 MW comes with significant innovations in areas such as blade design, nacelle design, cooling systems and load-optimized operation.

Finally, the V112-3.0 MW is designed around a large number of standard components that several suppliers can provide. These easily obtainable spare parts and components also help ensure reliability and high availability.

### **Perfect grid integration and stable output**

The V112-3.0 MW is designed for smooth integration with current and future grid/plant configurations with no need for expensive substation equipment. The V112-3.0 MW will make your wind power plant fully compliant at the point of common coupling – even in countries with most demanding grid codes. The turbine's advanced grid compliance system provides fast and powerful active and reactive power regulation to maintain grid stability, as well as excellent fault ride-through capabilities in the event of a grid disturbance.



### **Advanced power electronics conversion**

Advanced power electronics conversion ensures stable and scalable output from the turbine. Combined with a flexible operations strategy, advanced power electronics conversion allows you to increase power production by temporarily increasing the power output of the turbine in favorable conditions.

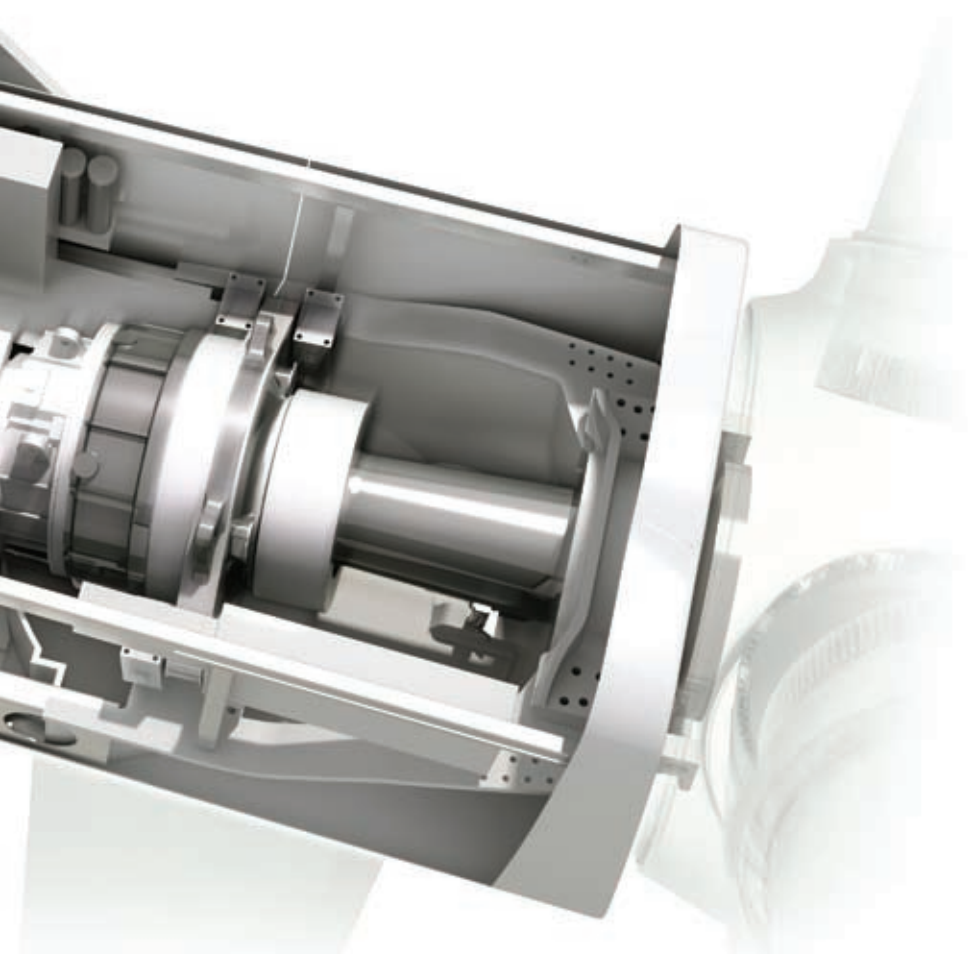


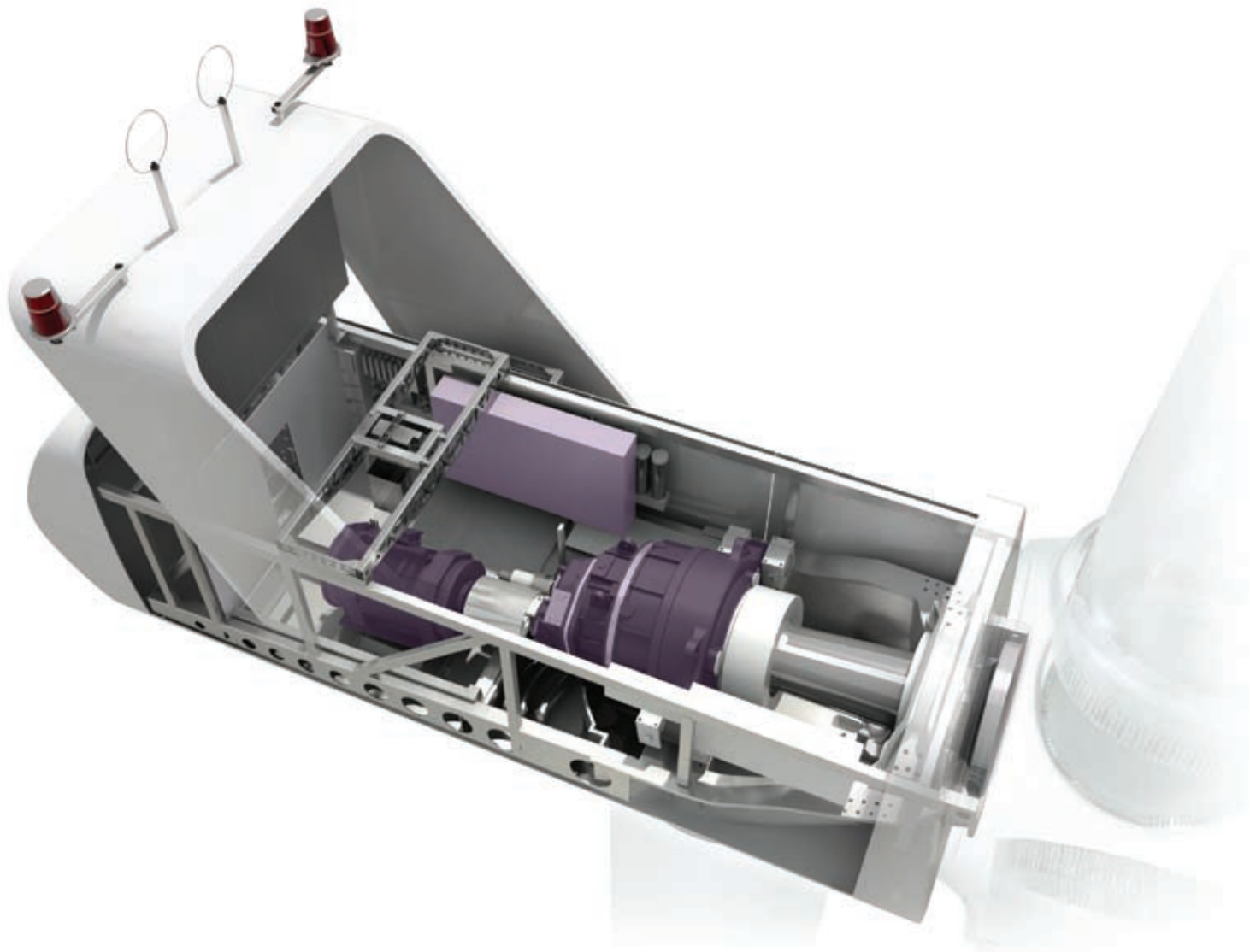
### **Built for easy maintenance**

The new nacelle design is a good example of innovative technology with decades of experience. The power converter is integrated into the nacelle floor, which provides more working space and makes it easier to service the components. Significantly more floor space and the conveniently located side doors are just some of the features that make service and maintenance both faster and easier.

The design makes smarter use of space while also setting new standards for ergonomics and safety in the nacelle. Tasks of all sizes can be completed effectively without compromising safety.

There is plenty of room for handling all spare parts, and the main components can be lifted in with ease. On sites with limited accessibility, it can often be a good idea to install nacelle components with the help of Vestas' innovative tower crane, which does away with the need for expensive mobile cranes.





#### **Load reduced operation**

Load reduced operation provides extra security at complex sites, where narrow sectors with extreme gusts and other abnormal wind conditions can occur. Load reduced operation enables the turbine to automatically protect itself against needless wear, which can damage the turbine and shorten the service life of some components.

#### **Main component preheating**

The cooling system in the V112-3.0 MW is also used for preheating, which prevents condensation. Primary components such as the generator, the gearbox, the converter and the blade hydraulic system are heated from inside by means of hot water in the cooling systems when the turbine restarts after a production stop in cold climates.

#### **Automatic lubrication**

Automatic lubrication of the pitch system, the hub, the yaw system, the main shaft and the generator boosts reliability while reducing the frequency of service calls.



## OPTIONS

The V112-3.0 MW is available with a number of special options that ensure compliance with local requirements or the customer's requests. These options include:

- Condition monitoring system
- Aviation markings on the blades
- Aviation lights
- Smoke detectors
- Fire extinguishing system in nacelle
- Company logo
- Low temperature operation to  $-30^{\circ}\text{C}$
- Ice detection system



## GROUNDBREAKING DESIGN

### **CoolerTop™ saves energy and reduces sound levels**

The environmentally friendly CoolerTop™ is yet another example of the V112-3.0 MW's state-of-the-art technology. It cools the water used in the turbine's cooling system by channeling wind into the heat exchanger. This boosts reliability, not least by reducing the number of moving parts and electrical components in the cooling system. CoolerTop™ reduces the turbine's own energy consumption and keeps sound levels low, making the V112-3.0 MW an exceptionally neighbour-friendly turbine. Finally, CoolerTop™ ensures sufficient cooling even at high altitudes, further enhancing the turbine's suitability for use almost everywhere in the world

### **Can be installed almost anywhere in the world**

Even though the V112-3.0 MW is the world's largest mass-produced wind turbine for low and medium wind speed sites, it complies with all the standard transportation limits. Even with its 54.6-metre blades, the V112-3.0 MW can be transported to most sites in the world without being subject to special fees and restrictions that can delay or increase the cost of wind power plant construction.





#### **A giant stride in aerodynamics**

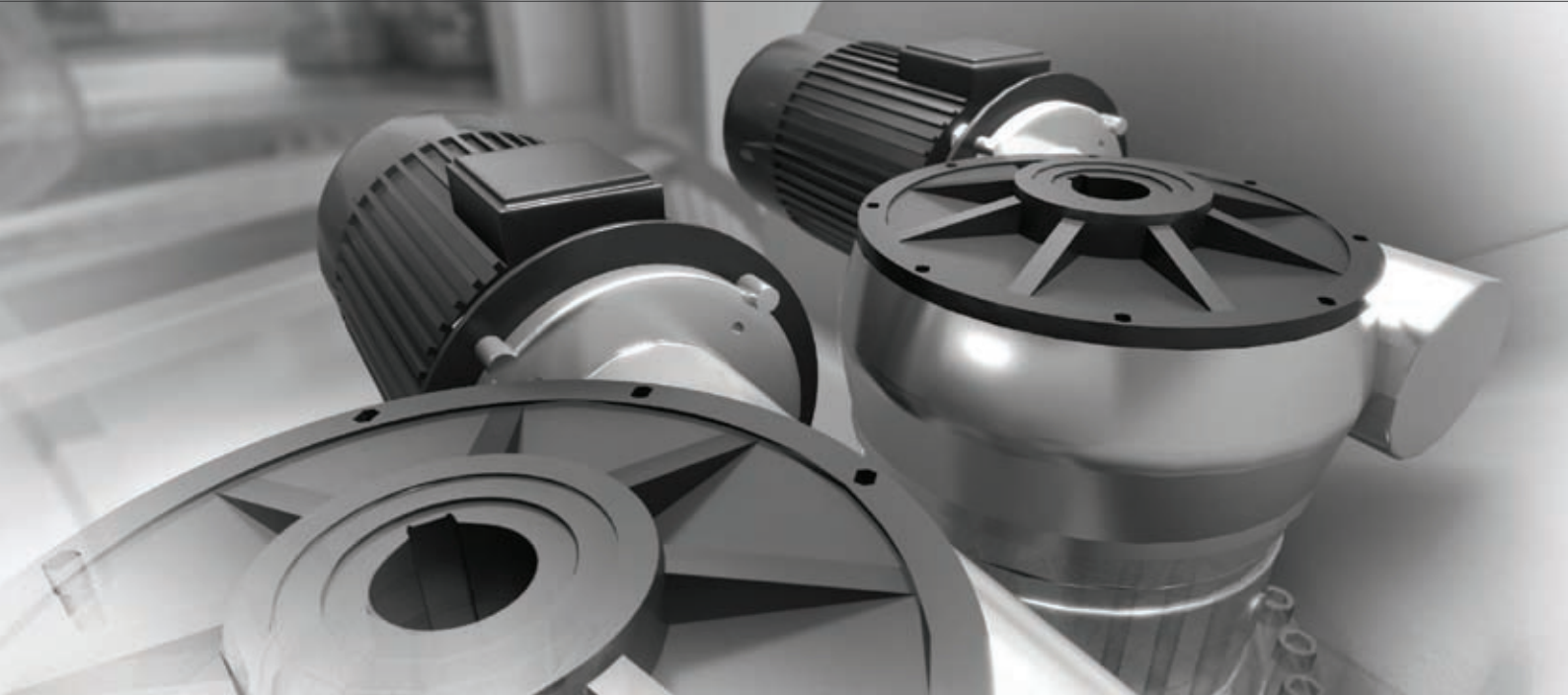
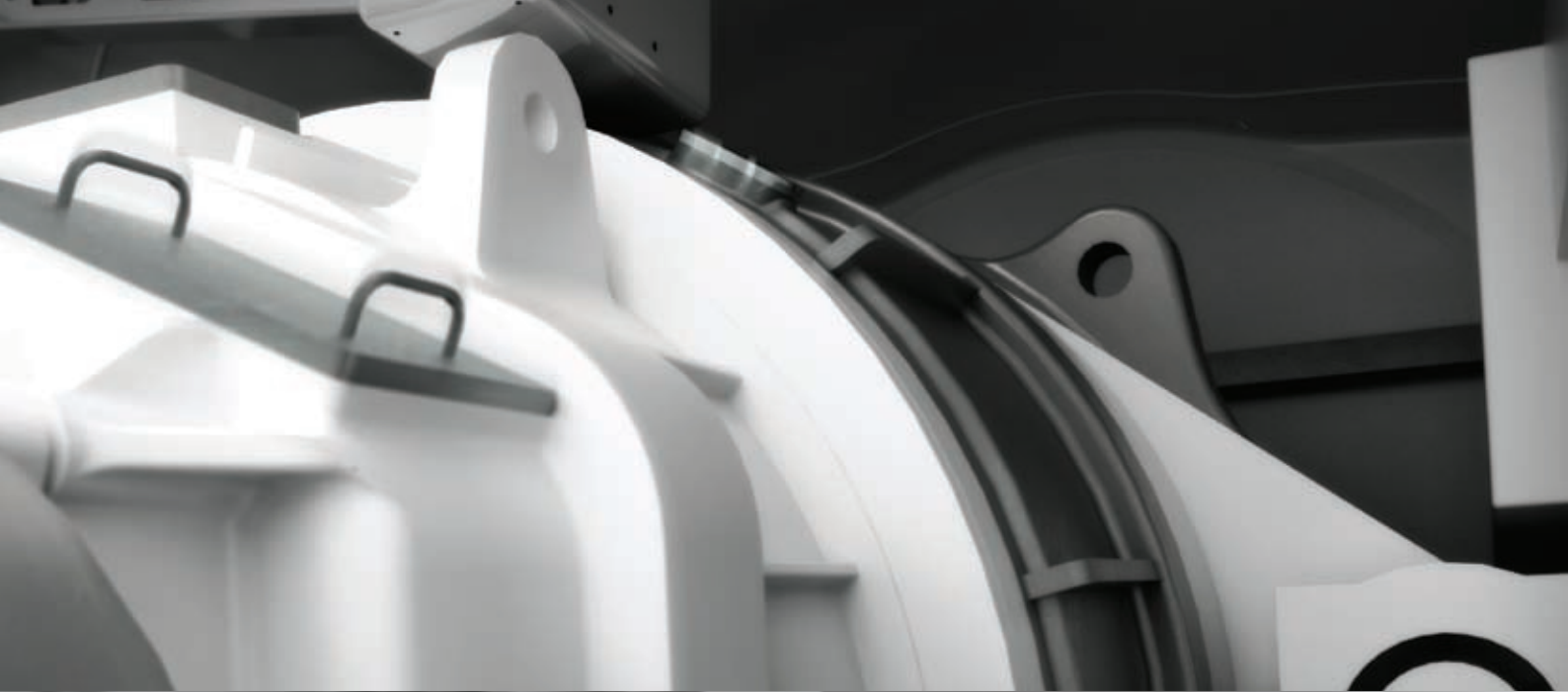
Vestas is famous for designing and producing some of the world's lightest and most effective blades – blades that deliver the greatest possible output while causing the least possible loads to the turbine.

With the groundbreaking 54.6-metre blades on the V112-3.0 MW, Vestas has taken another giant stride in aerodynamics. Although these blades have the same width as our 44-metre blades, they sweep an area that is 55% greater to deliver considerably higher output.

Finally, the blades are designed to be less sensitive to dirt, resulting in better performance at sites affected by salt, insects or other particles in the air.

#### **Low sound levels, high productivity**

The V112-3.0 MW is a quiet turbine even during optimal operation, but it is even quieter during low-noise operation. The turbine can be operated in configurable modes that keep within defined decibel ranges, without having a significant effect on productivity. This makes the V112-3.0 MW ideally suited for use anywhere in the world where sound-level limits are in force.





## VESTAS TAKES CARE OF YOUR INVESTMENT ROUND THE CLOCK

### **Verified component lifetime**

At the Vestas Testing Centre and Technology R&D, engineering experts and technicians use state-of-the-art testing methods to ensure that all components and systems meet our standards for safety, performance and reliability throughout their 20-year service life. These tests push the components beyond their specifications. One method is known as Highly Accelerated Life Testing, where some of the testing is conducted in a HALT chamber. Extreme fluctuations in temperatures combined with heavy vibrations are just some of the stress tests the components are subjected to here. This enables Vestas to eliminate design flaws long before the turbines reach the market.

### **Surveillance 24/7/365**

Our surveillance services are manned 24/7 all year round to provide real-time surveillance, remote troubleshooting and other services. These services can also detect potential errors and disruptions before they occur, as data from your turbines is gathered and analysed. This enables us to prepare a plan for preventative maintenance, saving you from unexpected production stops and costly downtime.

### **Service and maintenance**

Vestas has service centres around the globe and we are able to cover your every need, from simple cleaning and planned maintenance to emergency call-outs and on-site inventories customised for your turbines.



#### **Asset management and operation risk mitigation**

Your wind turbines have to be maintained with great care to avoid exposing your investment to unnecessary risks. And that is exactly what Active Output Management is designed to ensure – that you get the greatest possible return on your investment in a Vestas wind turbine.

AOM provides a number of advantages, such as detailed plans for service and maintenance, online monitoring, optimisation and troubleshooting, and a competitive insurance scheme. We even offer a full availability guarantee, where Vestas pays compensation if the turbine fails to meet the agreed availability targets.

#### **Project management for effective plants**

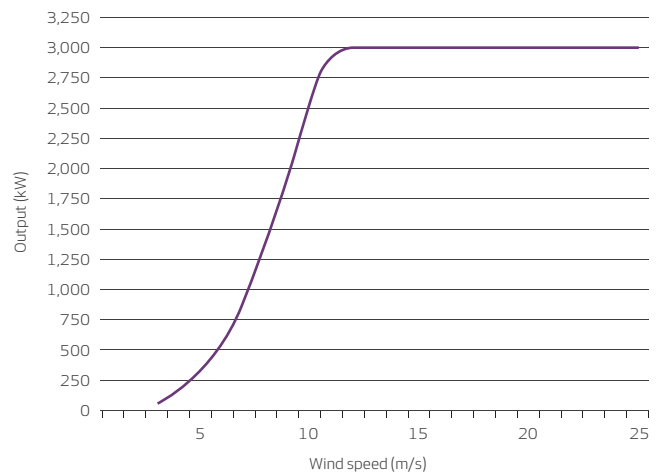
The better your turbines fit your wind site, the more profitable your plant will be. That's why Vestas offers to take on project management from the initial wind measurements to turnkey wind power plant. More than 30 years of international experience and local expertise enable us to complete:

- Wind and site studies
- Dimensioning the wind power project
- Selecting wind turbine types
- Installing the wind farm
- Servicing and maintenance throughout the turbine's service life
- Monitoring and remote troubleshooting.

## TECHNICAL DATA FOR V112-3.0 MW

<b>Power regulation</b>	pitch regulated with variable speed
<b>Operating data</b>	
Rated power	3,000 kW
Cut-in wind speed	3 m/s
Rated wind speed	12 m/s
Cut-out wind speed	25 m/s
Wind Class - IEC	IIA/IIIA
Max. altitude	1,500 m
Operational temperature range	standard range -20°C to 40°C low temperature option -30°C to 40°C
<b>Sound power</b>	
7 m/s	100 dB(A)
8 m/s	102.8 dB(A)
10 m/s	106.5 dB(A)
By 95% rated power	106.5 dB(A)
<b>Rotor</b>	
Rotor diameter	112 m
Swept area	9,852 m <sup>2</sup>
<b>Tower</b>	
Type	tubular steel tower
Hub heights	84, 94 and 119 m
<b>Electrial</b>	
Frequency	50 Hz/60 Hz
Converter type	full scale converter
Generator type	permanent magnet generator
<b>Main dimensions</b>	
<b>Blade</b>	
Length	54.6 m
Max. chord	4 m
<b>Nacelle</b>	
Height for transport	3.3 m
Height installed	3.9 m
Width	3.9 m
Length	14 m
<b>Tower</b>	
Max. section length	32.5 m
Max. diameter	4.2 m
<b>Hub</b>	
Height	3.9 m
Diameter	3.2 m
Max. weight per unit for transportation	70 metric tonnes

Power curve V112-3.0 MW



This product will not be marketed in the USA and Canada.  
All specifications subject to change without notice.

### **No. 1 in Modern Energy**

The world needs ever-greater supplies of clean, sustainable energy. Modern energy that promotes sustainable development and greater prosperity for all our planet's inhabitants. Vestas wind turbines are already generating more than 60 million MWh of electricity every year – enough to power all of Spain, for example – and we are ready to go even further. After more than 30 years in business, Vestas continues to pioneer the wind energy business, achieving breakthroughs that transform our entire industry. Our latest breakthrough is the V112-3.0 MW, the next great stride for modern energy.



No. 1 in Modern Energy

**Vestas Wind Systems A/S**

Alsvej 21  
8940 Randers SV  
Denmark

Tel: +45 9730 0000  
Fax: +45 9730 0001

[vestas@vestas.com](mailto:vestas@vestas.com)



[vestas.com](http://vestas.com)